

BER

Knurling machine with motorised axes and NC control that memorises the axis positions



- Two motorised milling units with 57 m/min speed with Ø 130 milling tool
- Axes positioned independently
- X and Y adjustment by means of 4 gear motors and ground recirculating ball screws. The position is defined by encoder positioned on the screws; homing is carried out using both over-travel microswitch and zero notch on the encoder
- Axes slide along linear guides with recirculating ball blocks
- System with eccentric cam and graduated vernier for head rotation to angle the milling tools which can tilt to a maximum of 10° internal and 10° external taking as 0° the perpendicular position of the milling tool to the work table
- Maximum roller size 130 mm in both positions, could be greater if the machine does not have retractable mobile rollers, see below.
- Working range: maximum profile size 300 mm (width), distance between milling tools 240 mm (groove distance), maximum profile height 288 mm
- Integral safety guard around the work area: guard opening 550 mm raised by gas spring, access to tools restricted by bands adjusted to the profile
- Excellent visibility of machining point
- Control with Ivory

- Bar forwards/backwards control for milling tool positioning
- Remote controls: axis adjustment commutator, jog button for axis setting
- Side pushers and quick manual positioning
- Dimensions 1790hx1680x805d mm, Weight 440 Kg
- Inverter kit, controlled by program with the possibility of associating the speed for each type of profile entered in the archive. Operation at 50 Hz allows machining at approx. 57 m/min, at 18 Hz approx. 20 m/min and at 87 Hz approx. 100 m/min

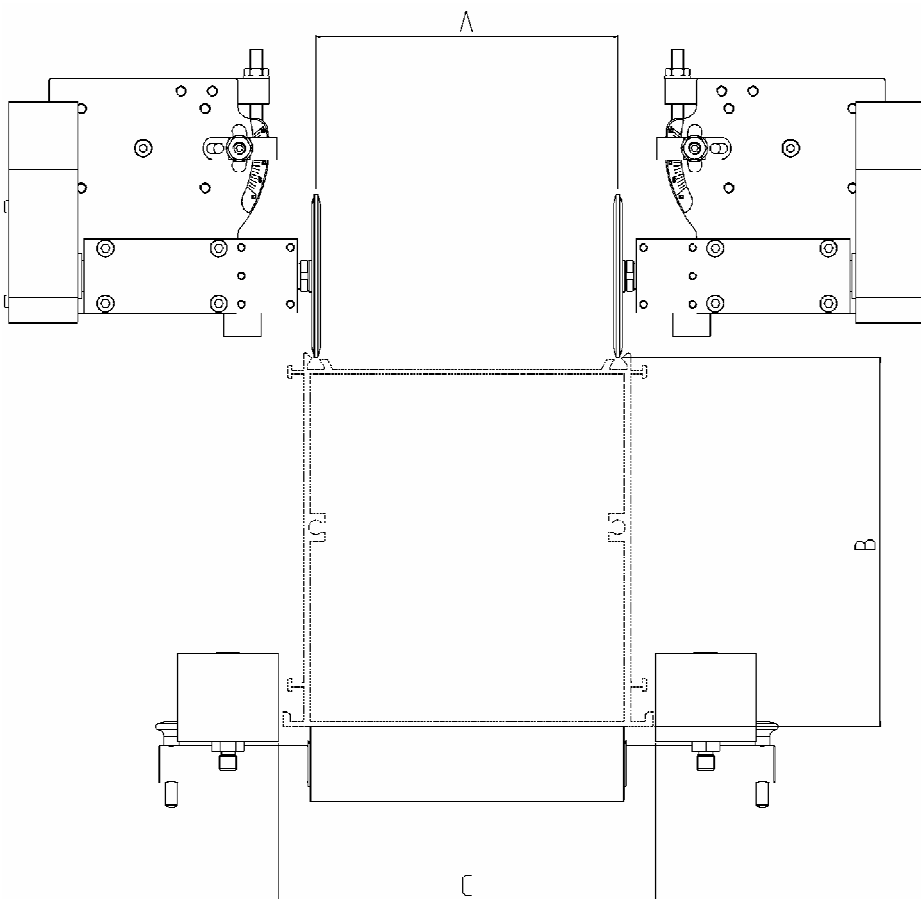
Accessories supplied:

- 2 milling tools for knurling – to be defined according to the profile to be machined

Bar Optionals:

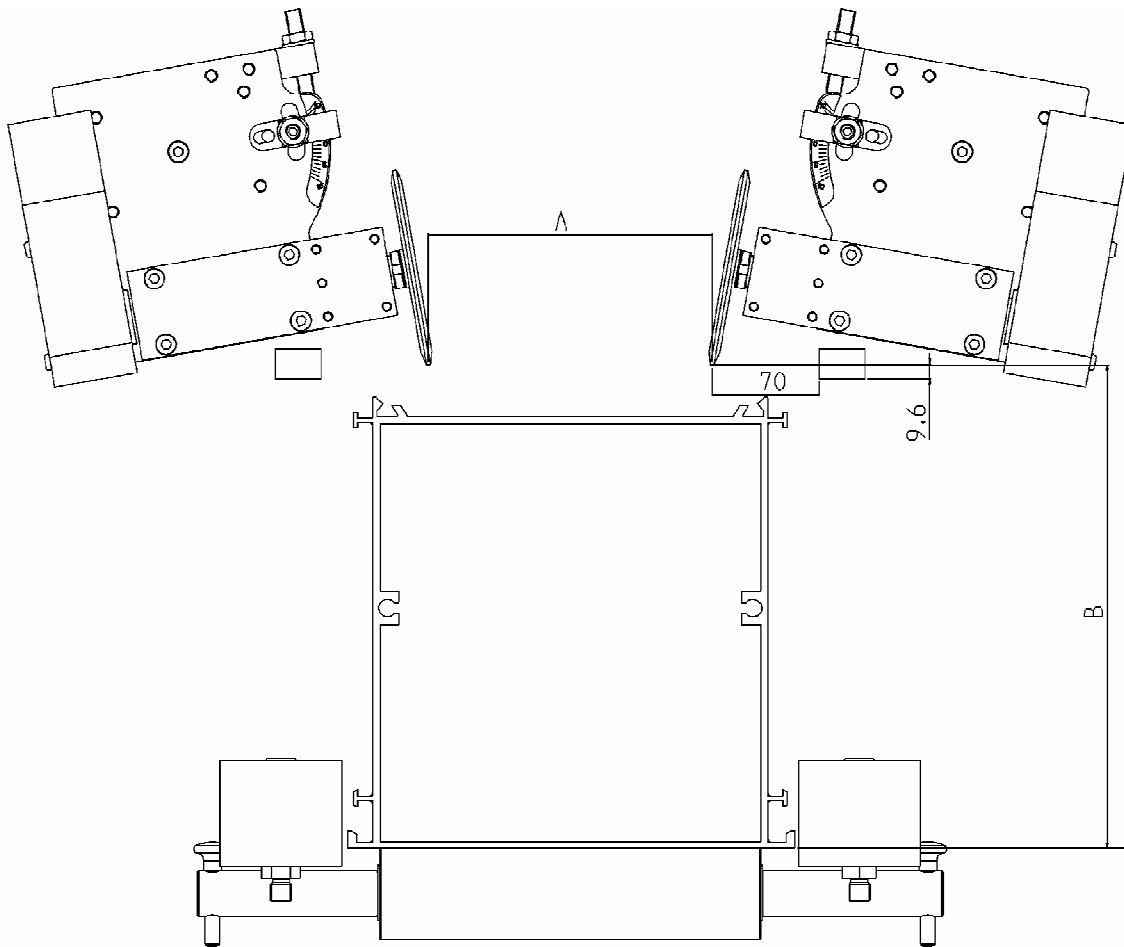
- The option of working in series with Thermal Bridging Transfer device
- Retractable mobile rollers under the table that allow any shaped roller to be fitted up to a maximum diameter of 130 mm, motorised or governed by NC control
- Customised rollers, tools of different thicknesses, protection kit and price supplement for special tensions
- Special roller support for profiles with C section

Work area -straight tools



	Min	Max
A	Tool thickness	240
B	0	293
C	0	300
Y-V		175
Z-W		313

- 10° tool angle



	Tool min	Tool max	Max profile width	Max profile heigh
A	0	187	A	-
B	1	320	-	B

- maximum tool offset in relation to centre (valid for both tools)

