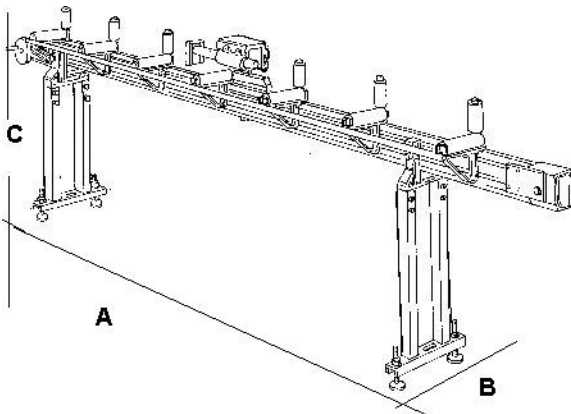


ASSOMAK



Roller table with manual length stop positioning by handwheel



	A(mm)	B(mm)	C(mm)	Kg
m 3	3.540	310	1.170	50
m 4,2	4.740	310	1.170	73
m 6	6.540	310	1.170	110

Technical characteristics:

- Lengths available 3000, 4200, 6000 mm
- Pneumatic stop locking
- Minimum cut 0 mm
- Measurement reading on millimetre band by magnifying glass
- Loading capacity per linear metre 3 Kg
- Width of bar resting surface 200 mm
- Patented length stop with sliding surface under the working table, to give constant reference under all working conditions.

STANDARD ACCESSORIES:

Description	Code
Pneumatic stop locking	PR 22134
Loading capacity: Kg 3 per meter	
Belt-driven positioning	
Plastic rollers	
Carton packing	

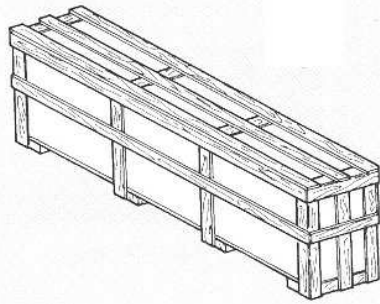
OPTIONALS:

Description	Code
Additional roller for roller table	PR-22166

PACKING

Description	Code
Crate packing – 3 Mt.	FC-74419
Crate packing – 4,2 Mt.	FC-76821
Crate packing – 6 Mt.	FC-74422

Crate packing overall dimensions:



	A (mm)	B (mm)	C (mm)	Kg
m. 3	3.640	290	440	67
m. 4,2	4.680	290	440	94
m. 6	6.640	290	440	168